

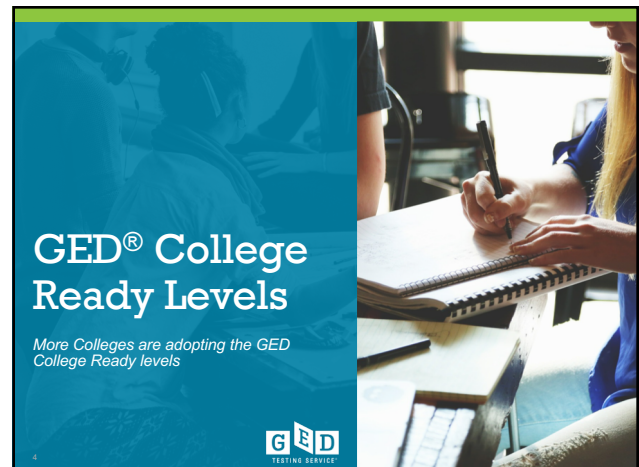
1



2

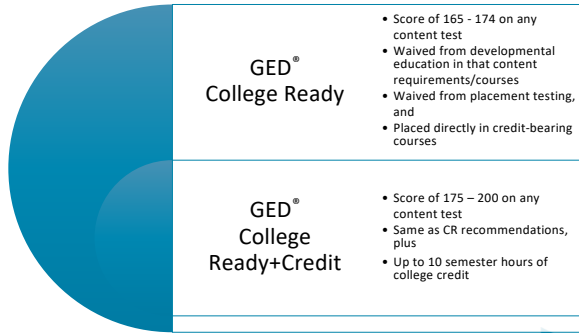


3



4

American Council on Education (ACE) Recommendations for the GED® Test



5



Many colleges have already adopted the ACE® Credit Recommendations

- Approximately 250 colleges across the U.S. have implemented one, or both, of the recommendations (CR and/or CR+credit)
 - Colorado Community College System (both recommendations)
 - Connecticut Public College System
 - Georgia Technical College System
 - Illinois Community College System
 - Kansas Board of Regents (4-year colleges)
 - Kentucky Community College System
 - Ohio Community College System
 - Virginia Community College System
- Additional Colleges in AL, AZ, KS, MA, MO, NJ, NM, OR, PA, RI, WA



6

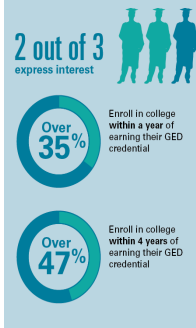
GED® Test Outcomes Research Update

Evidence that GED® Graduates are better prepared for success in college than ever before



7

Our Graduates Are Interested in College

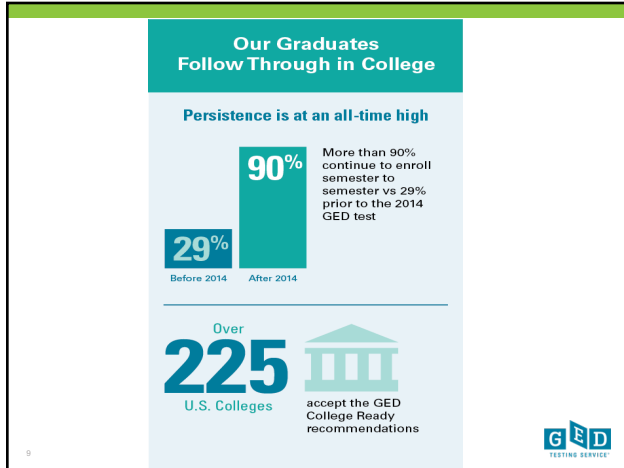


Data match with the National Student Clearing House shows:

- **35%** of GED grads enroll in college within **1 year**
- **41%** of GED grads enroll in college within **2 years**
- **45%** of GED grads enroll in college within **3 years**
- **47%** of GED grads enroll in college within **4 years**



8



9

Research: Next Steps

- We are currently working with a few states and community colleges on data matching of GED test passers to determine enrollment in college, persistence in college, degrees/certificates earned, GPAs, etc as well as job related data.
- We are looking for additional state or local partners across the U.S. to do this type of data matching to study what our GED test passers are doing after earning their credential.

10

Thank you!

Brian Smith
Regional Manager, State Relationships
202-309-2906
Brian.Smith@GED.com

11