



NASDAE

National Association of State
Directors of Adult Education

Braided & Alternative Funding

Arizona

ARIZONA – Five Year Funding History

Federal Funding History

PY21-22: \$15,554,531

PY22-23: \$15,918,012

PY23-24: \$15,995,093

PY24-25: \$16,080,717

PY25-26: \$15,779,076.86

State Funding History (Title II)

PY21-22: \$4,867,800

PY22-23: \$4,873,400

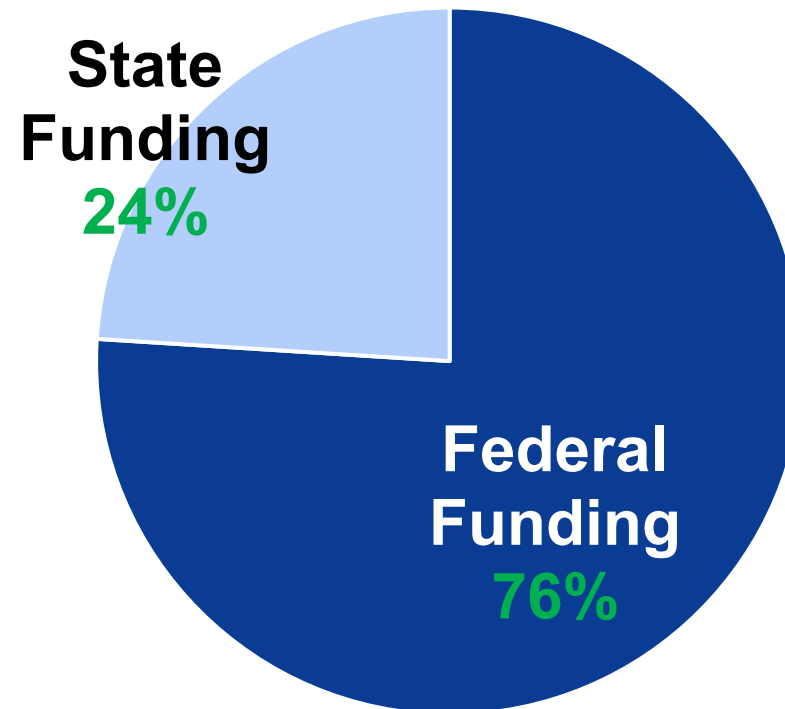
PY23-24: \$4,898,900

PY24-25: \$4,903,200

PY25-26: \$4,903,200*

TOTAL: \$20,682,276.68

Current Funding Appropriation



■ Federal Funding ■ State Funding



NASDAE
National Association of State
Directors of Adult Education

ARIZONA – ADDITIONAL STATE FUNDING OPPORTUNITY

Fiscal Years 2022 – 2024

- AZ legislature passed three state statutes and appropriated state general funds for three ‘continuing high school and workforce development’ programs, beginning in July 2022.
 - ARS §15-217.01- *Goodwill Continuing High School Program* – up to \$4.62 million
 - ARS §15-217.02 – *Adult Workforce and High School Diploma Programs (For Profit High School Credit Recovery)* – \$6 million
 - **ARS §15-217.0 – *Community College Adult Education Workforce Development Program (Title II providers only)*– \$6 million**
- *These programs were administered by staff with the Arizona Department of Education-Adult Education & High School Equivalency Services in coordination with the AZ State Board of Education.*

ARIZONA – ADDITIONAL STATE FUNDING OPPORTUNITY

Current Fiscal Year: 2025 – 2025

- **ARS §15-217.01 – Community College Adult Education Workforce Development Program** (*Title II providers only*)– \$ 6 million (5% admin fee for ADE- AES staff)
- **ARS §15-217.02- Continuing High School Program** – up to \$4 million
- *Note: Administration for the Adult Workforce and High School Diploma Programs (For Profit High School Credit Recovery) – \$6 million - was moved to another state agency*

Considerations & Options for a Reduction in Federal Funding

- New grant competition - require applications from consortiums and organizations with larger in-kind and funding contributions
- Workforce and industry sponsorships
- Foundation grants
- Funding requests to state legislature during budget process
- Note: as a state agency, all options would have to be approved by the agency leadership team.



A **Smart Start** to your career.
Braided and Alternative Funding

Nikitna Barnes, Mississippi Community College Board

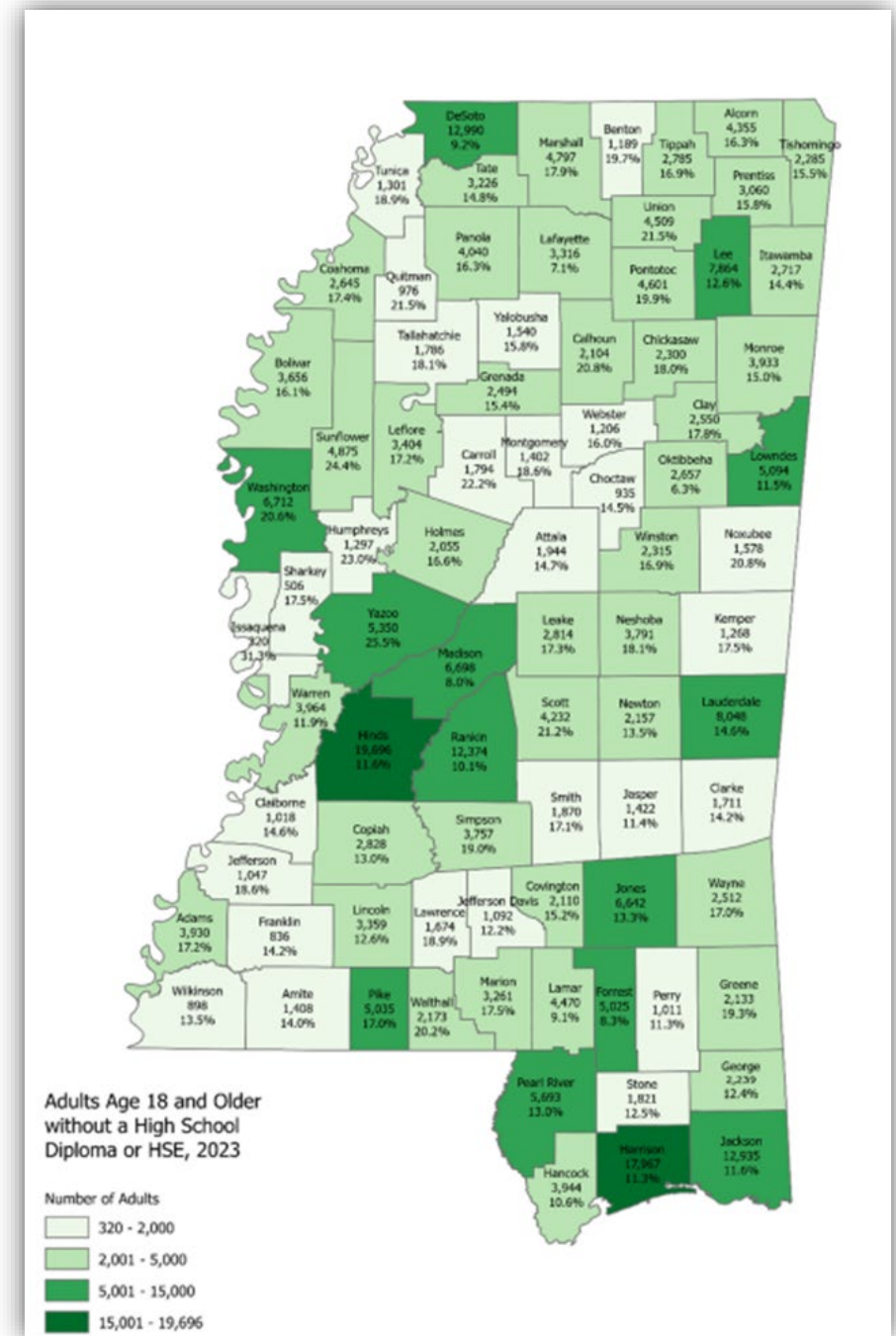


November 5, 2025

MS Adult Education Overview

- **Adult Population (18-64) – 1,763,988**
- **Around 234,000 (18-64) - no high school diploma or equivalent**
 - **Enroll 8,000 – 10,000 annually**
 - **Around 30% are 16-18 year olds**
- **16-18 year olds**
 - **Higher performing students**
- **90% - Adult education students enrolled are basic skills deficient in either math or reading, sometimes both**
 - **Basic skills deficient = Below 8.9 grade equivalency**

Sources: LACES; U.S. Census Bureau, 2019-2023 American Community Survey 5-Year Estimates.



Program Services and Support

- **High School Equivalency classes**

- Face-to-face
- Hybrid
- Online (eDULT)

- **Multiple HSE pathways**

- GED
- HiSET
- Total Transcript
- Competency-Based

- **Technology**

- Northstar Digital Literacy
- Online Workforce College
- Burlington English
- IC3 Digital Literacy

- **Mississippi Integrated Basic Education & Skills Training (MIBEST)**

- Ability to Benefit
- Tuition Assistance
- Student Support Services

- **IET**

- Multi-level Career Pathways

- **Smart Start Course**

- Work ready preparation
- MS Works

- **English as a Second Language Classes**

- **National Career Readiness Certificate**

- ACT WorkKeys® Curriculum (Preparation)
- ACT WorkKeys® Assessments
 - National Career Readiness Certificate

- **Supportive Services**

- College & Career Navigators



Mississippi Adult Education Programs



- Coahoma CC
- Copiah-Lincoln CC
- East Central CC
- East Mississippi CC
- Grenada Public Schools
- Hinds CC
- Holmes CC
- Itawamba CC
- Jones College

- Meridian CC
- Mississippi Delta CC
- Mississippi Gulf Coast CC
- Northeast Mississippi CC
- Northwest Mississippi CC
- Pascagoula Public Schools
- Pearl River CC
- Rankin County Public Schools
- Southwest CC

<https://skillupmississippi.com/>



State and Program Level Braiding Funding

State Level Braided Funding

Dropout Recovery

- Student Tuition
- Test Fees
- Student Support Services
- Educational Materials
- Staff Salary/Instructor Cost
- Program Marketing
- Professional Development Training

MS Department of Employment Services

- ACT WorkKeys Test
- Short-term Workforce Training

MS Department of Human Services

- Staff Salary- Navigator & Instructor
- Student Support Services
- Student Tuition
- Test/Certificate Fees
- Professional Development Training

W. K. Kellogg Foundation

- Student Tuition
- Staff Salary- Navigator
- Assessment Fees
- Student Support Services
- Professional Development Training
- Certification Fees

Program Level Braided Funding

2nd Chance Mississippi

- Test Fees
- Students Financial Assistance
- Training Fees
- Food Services
- Transportation
- Childcare
- Program Marketing

Accelerate Mississippi

- Basic Skills Training
- Instructors Salary
- Professional Development Training

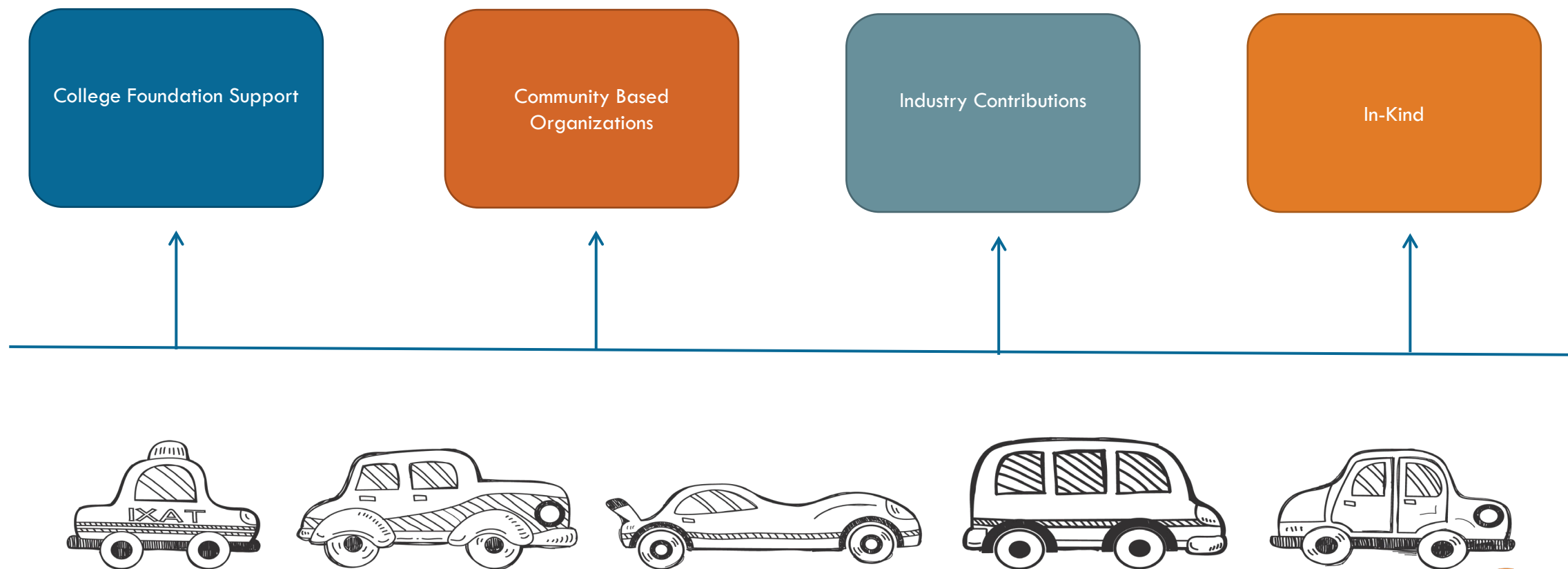
ProLiteracy Worldwide Literacy Opportunity Fund (Nora Roberts Grant)

- Short-term WF training Programs
- Training Supplies
- Testing/Exam Fees
- Any supplies needed for class

Workforce Opportunity Investment Act (WIOA)

- WF Training Cost through referral to WIN Job Centers
- WIOA Gateway-WF training and support services for youth(16-24)

Additional Funding Sources





THANK YOU
QUESTIONS?

CONTACT

Nikitna Barnes
Assistant Director of Adult Education for
Grants and Special Programs
nbarnes@mccb.edu

NEW MEXICO HIGHER EDUCATION DEPARTMENT ADULT EDUCATION DIVISION

AMBER GALLUP, PH.D., DIRECTOR

NEW MEXICO
HIGHER EDUCATION
DEPARTMENT

Fostering Student Success from Cradle to Career



NMHED'S ADULT EDUCATION DIVISION

- Oversees 3 statewide systems:
 - Adult education (AEFLA)
 - Adult literacy (state only)
 - High school equivalency
- ~128% increase in funding over the last 4 years (recurring & nonrecurring)



Several strategies have helped us increase and diversify funding sources at the state:

- TANF funding *under purposes 3 and 4*, appropriated incrementally, has doubled the amount of federal funding available to our 3 systems.
- Integrated Education & Training (IET) system expansion has justified funding and partnership requests.
- We argue for *parts* of the budgets, bills, and grant apps of *other* agencies. We serve the population they must also serve, so we provide access. *Ongoing* relationship-building across agencies is key.
- Somos Un Pueblo Unido. Our students are organized. Somos advocates on their behalf and has political power. Why shouldn't state funding directly benefit the workers who contribute to the wealth of the state?

Several strategies have helped us increase and diversify funding sources at the state:

- Planned meetings with decision-makers, where we present both the data-informed ROI and the impact of adult education on families with **children**- this has helped us boost funding in key areas each year.
- Legislation carrying carefully-worded appropriation language introduced by champion legislators (e.g., free high school equivalency test legislation). Small pots *but* have helped us fund key statewide licenses, increase numbers served, improve outcomes.
- Concerted campaign to train students as “ambassadors” has given us access to pool of passionate advocates for meetings with legislators and others. We now partner with and rely on them more.

A young man with short, curly brown hair is smiling at the camera. He is wearing a grey t-shirt under a blue and white plaid shirt, which is open. He has a yellow backpack on his right shoulder. In the background, a yellow school bus is visible with the words "SCHOOL BUS" on its front. Other students are blurred in the background, suggesting a school setting.

Amber.Gallup@hed.nm.gov
505-231-7490

North Carolina's Braided Funding

NC AEFLA Funding

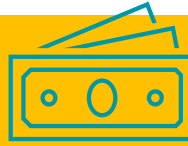
\$20,308,090 in AEFLA Federal dollars

NC State Matching Dollars

\$41,000,000 in State-generated FTE



Money with a Mission



66 Providers



58 Community Colleges



8 Community-Based Organizations



6,500 Faculty and Staff

Base (15%)

Split evenly among providers

- \$2,163,149
- Base funding is distributed evenly across all 66 providers, ensuring each receives the same amount.

Access (50%)

Weighted contact hours

- \$7,210,498
- Increased funding supports providers helping adult learners with the highest needs.

Performance (35%)

Determined by number and percentage of MSGs

- \$5,047,349

The Power Behind Every Student — Here's How It Adds Up!



Total Investment: \$61.3 million



State fuels 67% of the total



Federal supports 33%



Each student benefits from \$943 of support

65,000 Students Served

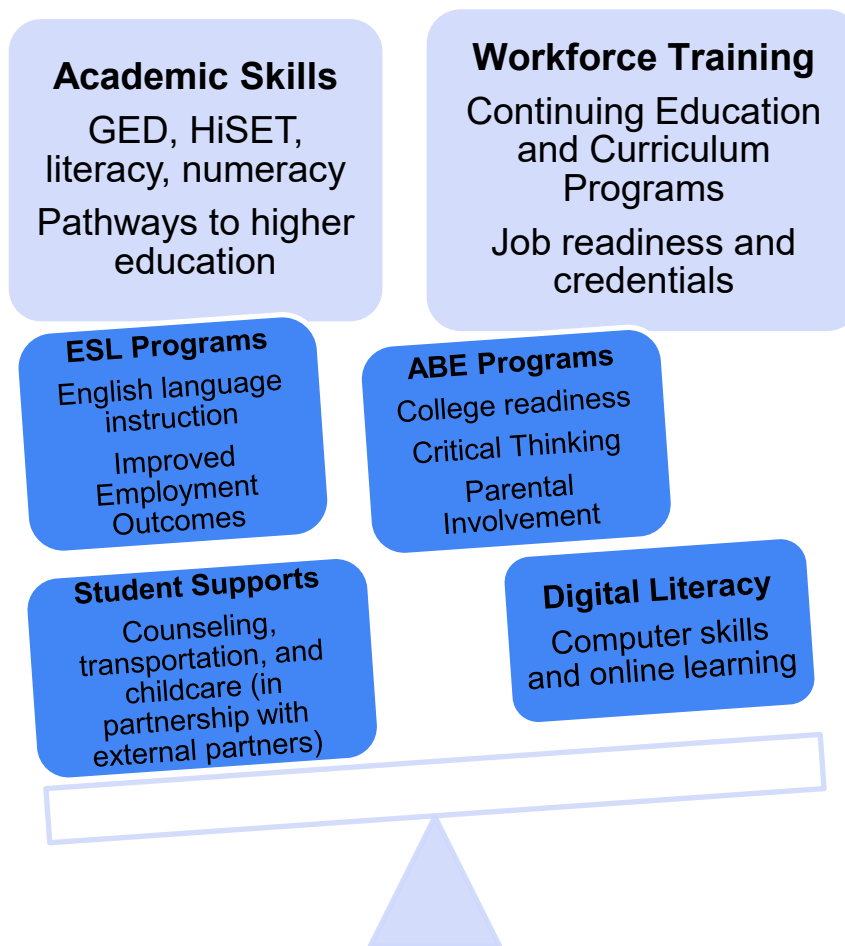


NASDAE

National Association of State
Directors of Adult Education



Investing in Second Chances and Stronger Futures



*The Balance of
Economic
Mobility Begins
with Us*

